

tacs News



Edition - June 2007



RETC

Two years have again passed: We're exhibiting at the RETC show! If you have a chance, please visit us at **Booth 310**, and have a look at our latest developments and innovations.

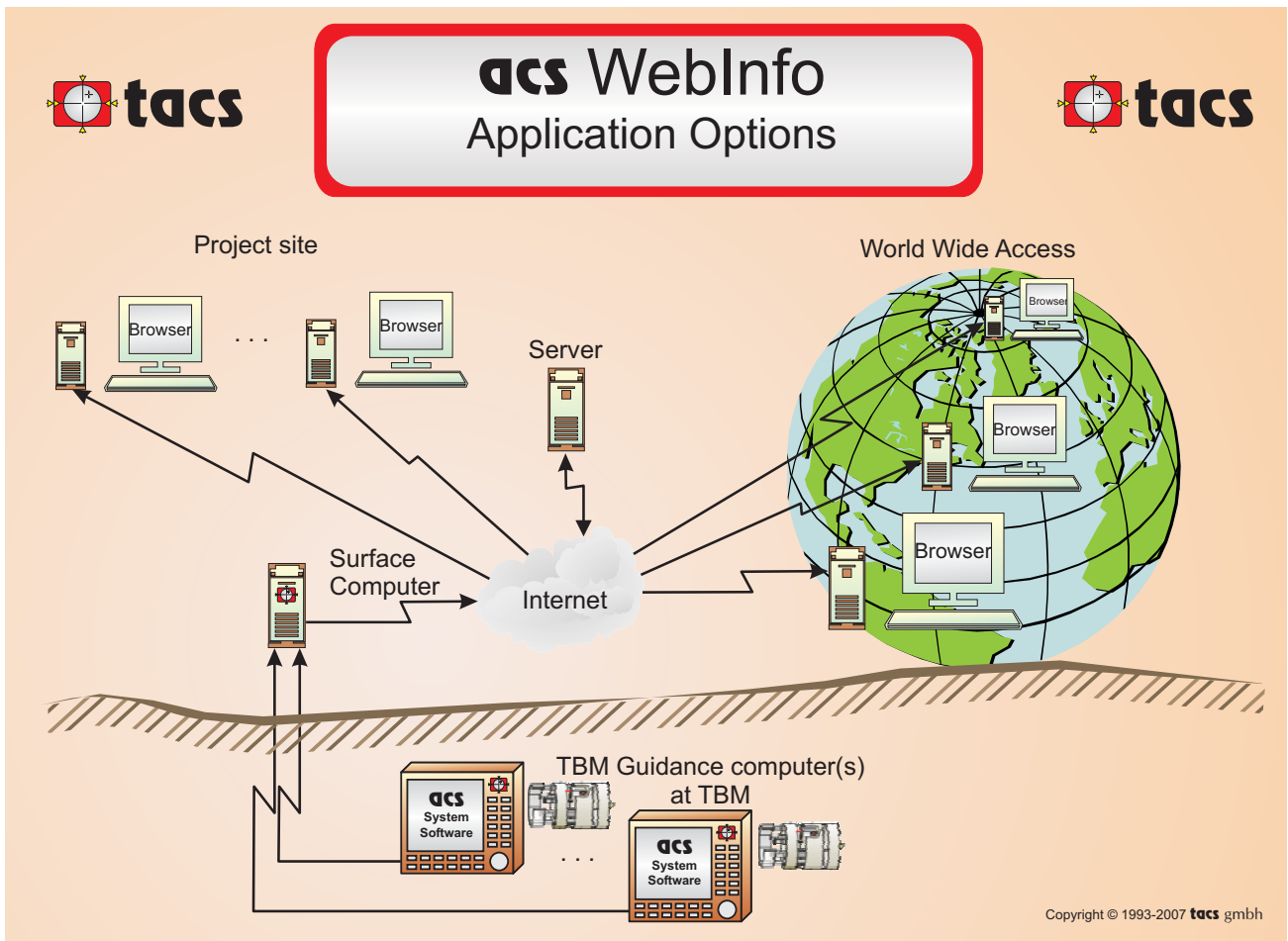
Rapid Excavation and Tunneling Conference

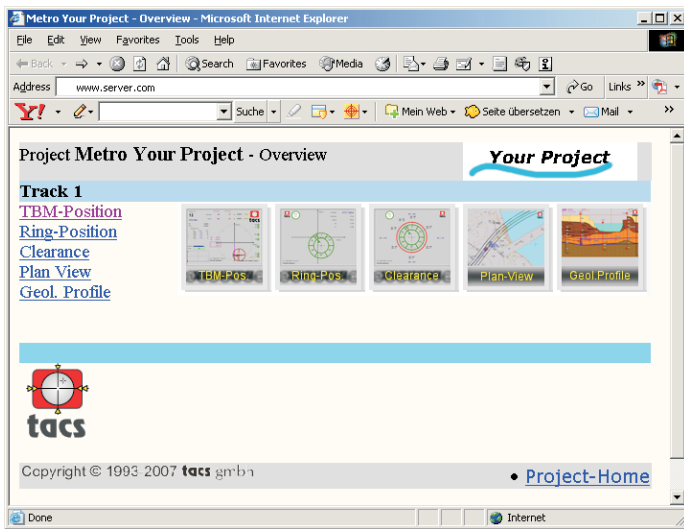
June 11-13, 2007, Toronto, Sheraton Centre Toronto
123 Queen Street West, Toronto, ON, M5H 2M9 Canada

acs WebInfo



Actual information from your Guidance System on any computer with internet access





tacs WebInfo- Overview

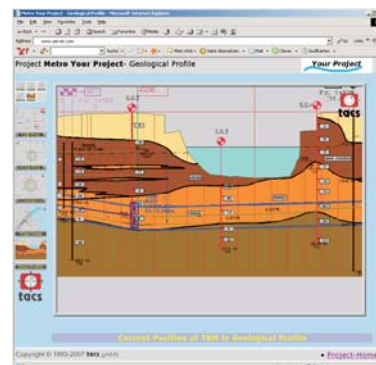
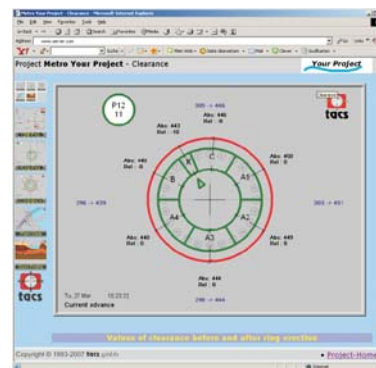
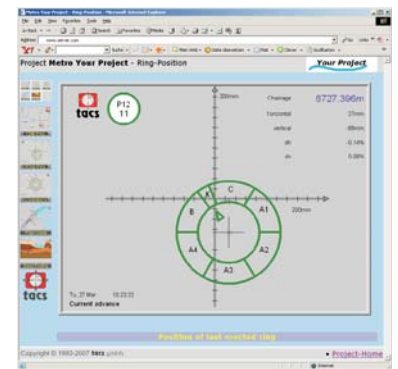
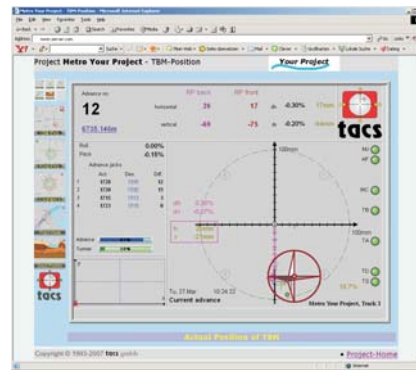
The **tacs WebInfo** application is an enhancement of our **tacs Viewer** application, which is usually used in the network of the local construction site.

For the **tacs WebInfo** application you just require a computer with internet access and a standard web browser and you have world-wide access to the actual position of your TBM and information provided from the **tacs** Guidance System.

No additional software is required to install.

The most interesting information windows of the Guidance System are provided on a web server.

- **TBM Position**
actual position of the TBM
- **Ring Position**
position of the last erected ring
- **Clearance**
clearance and position of the last erected ring inside the TBM tail shield
- **Plan View**
plan view of the project with actual graphical position of the TBM
- **Geological Profile**
geological profile of the project with actual graphical position of the TBM



tacs gmbh
 Heinrich-Heine-Str. 1 Tel +49 - 89 - 578396 - 16
 80686 München Fax +49 - 89 - 578396 - 32
 Germany email info@tacs gmbh.de
 Internet www.tacs gmbh.de

Copyright © 2007 **tacs** gmbh